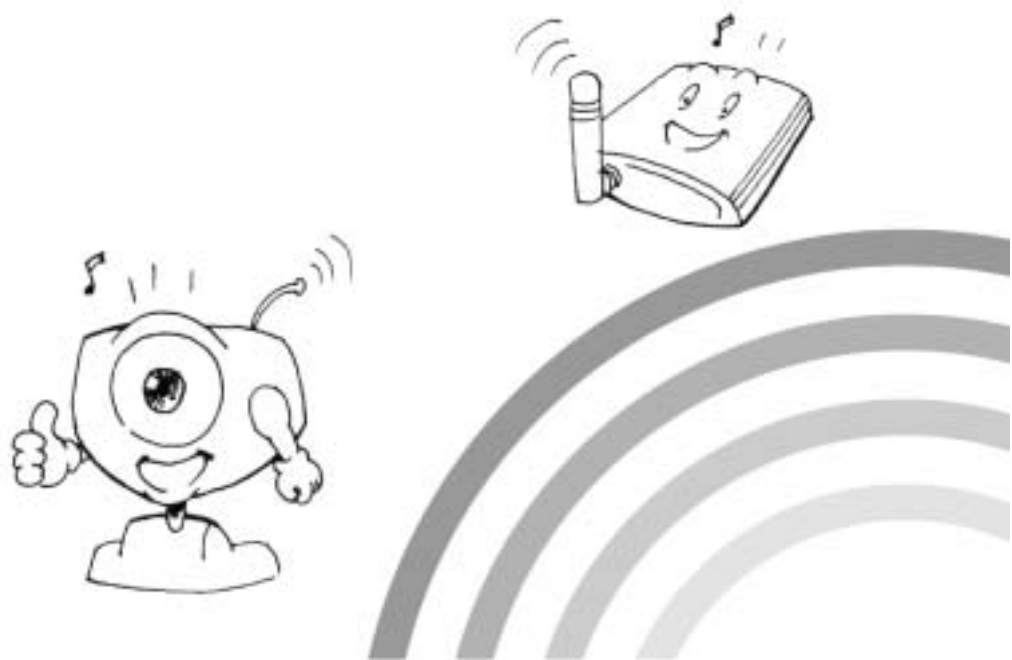

WinDVR

User's Manual 2.4GHz Wireless PC Camera



CONTENTS

Part 1.GP-723 system requirements	2
Part 2.GP-723 driver installation	2
Part 3.Microsoft DirectX9 installation.....	7
Part 4. WinDVR software installation.....	10
Part 5. WinDVR Initial System Settings.....	14
Part 6. WinDVR widget introduction	16
Part 7.Using WinDVR.....	21

Part 1. GP-723 system requirements

System requirements:

- Microsoft Windows 2000 / Windows 2000 server /Windows XP SP2
- CPU: Pentium 1.5GHz or better
- Memory: upwards of 128MB
- VGA graphic card upwards of 32MB
- Sound card
- CD-ROM
- USB 2.0 port

Caution: the product is only suitable for PC with USB 2.0 port. It won't work when connecting with PC with USB 1.1 or previous version. If you want to connect it with PC with USB 1.1, you should install a PCI USB 2.0 commutator for conversion.

Part 2. GP-723 driver installation

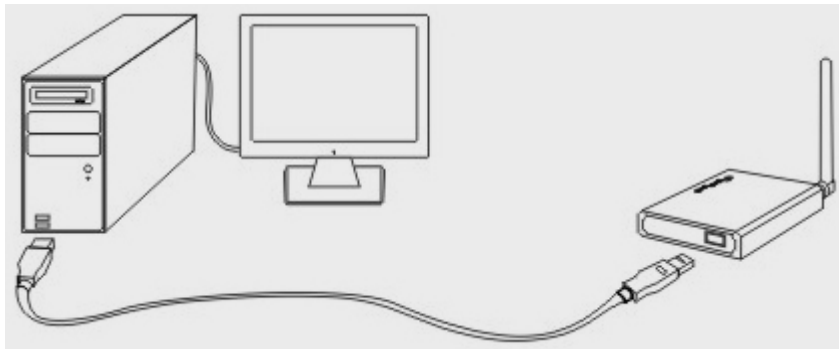
- 1 . Please insert the installation CD into the CD-ROM driver,



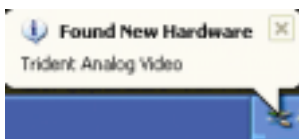
- 2 . then you will see the screen below. :



- 3 . Connect GP-723 to your PC as picture 1, then there is a “Found New Hardware” hint at the right and bottom edge of the PC screen as picture 2:

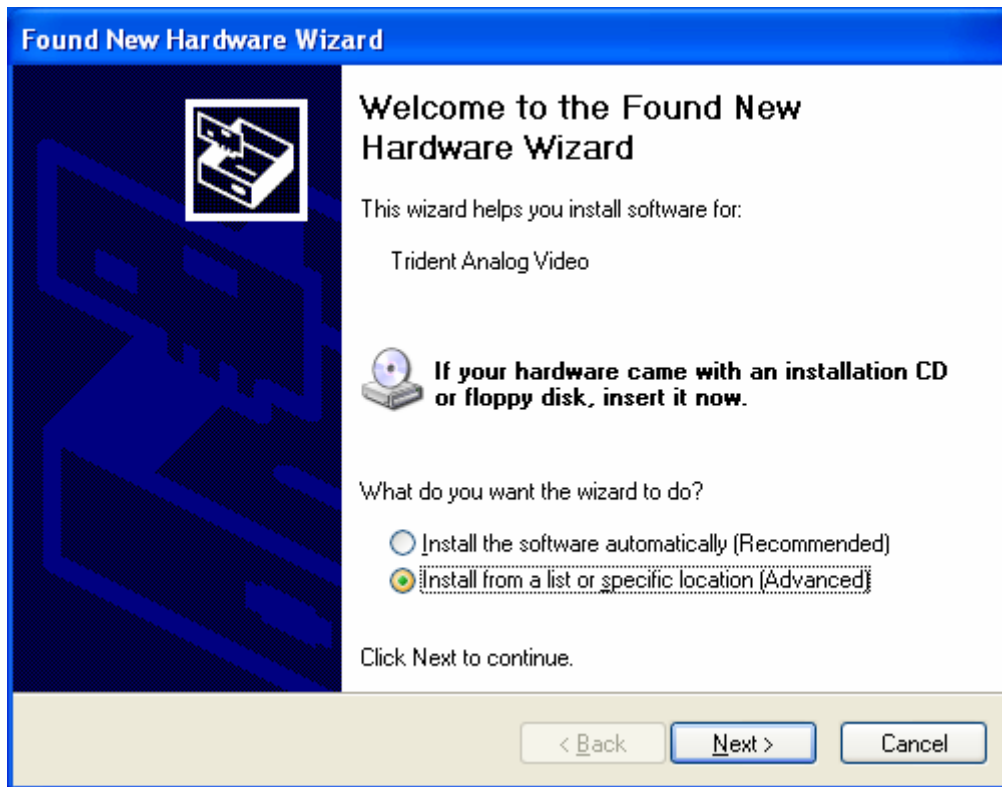


Picture 1

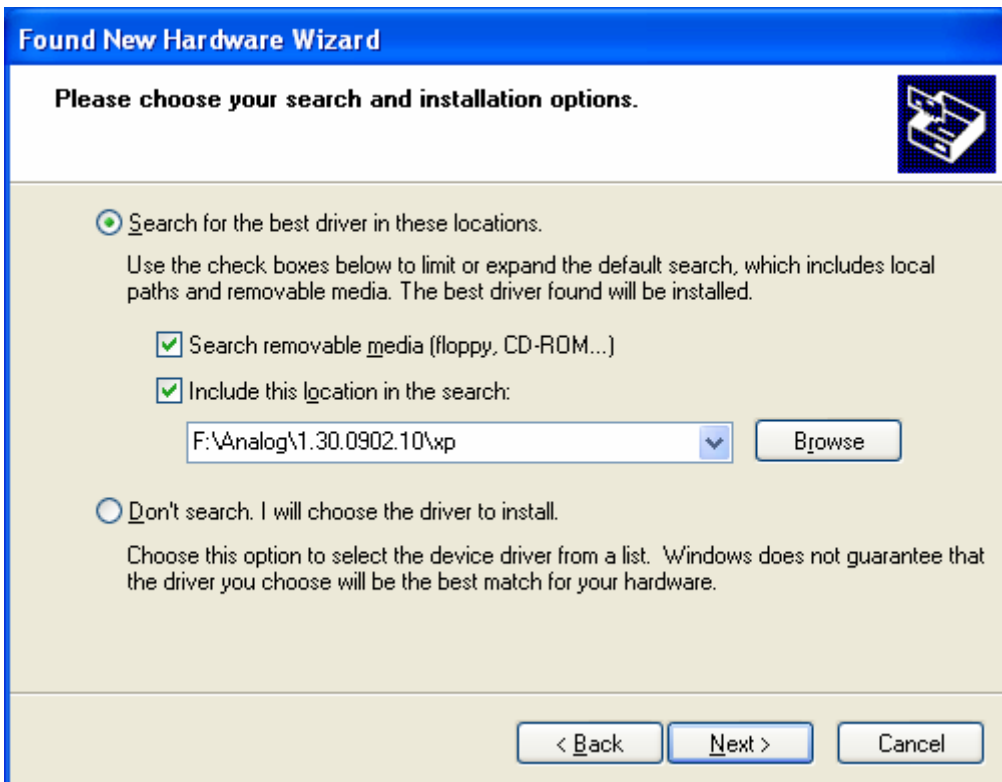


Picture 2

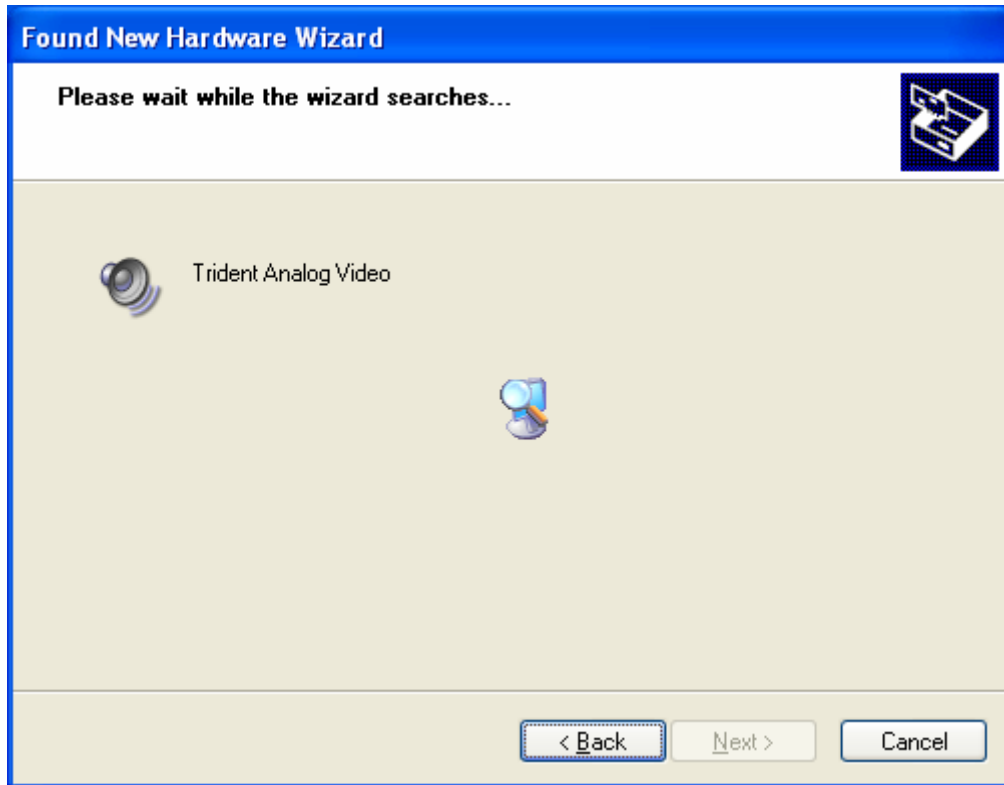
- 4 . “Found New Hardware Wizard” window pops up. Choose the second option and click **Next** to continue.



5. Search and Installation window pops up as follow, choose “ Search removable media(floppy, CD-ROM.)” and “include this location in the search;”



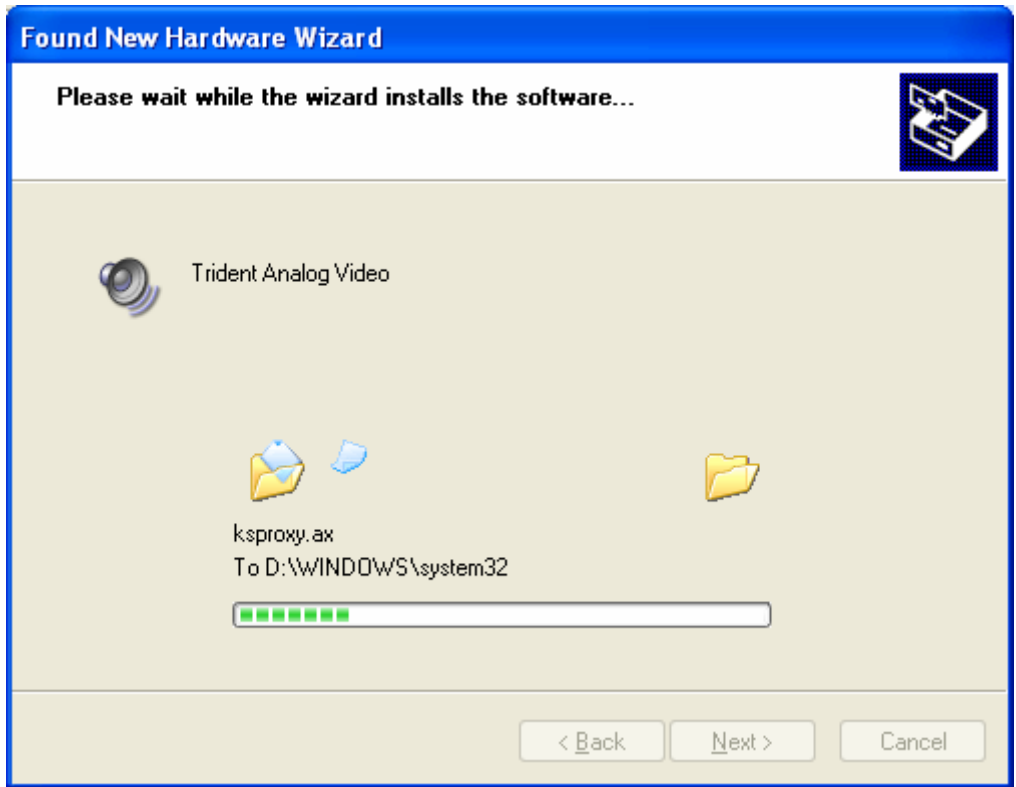
6. Click Next, then wait for wizard searching window pops up as follows:



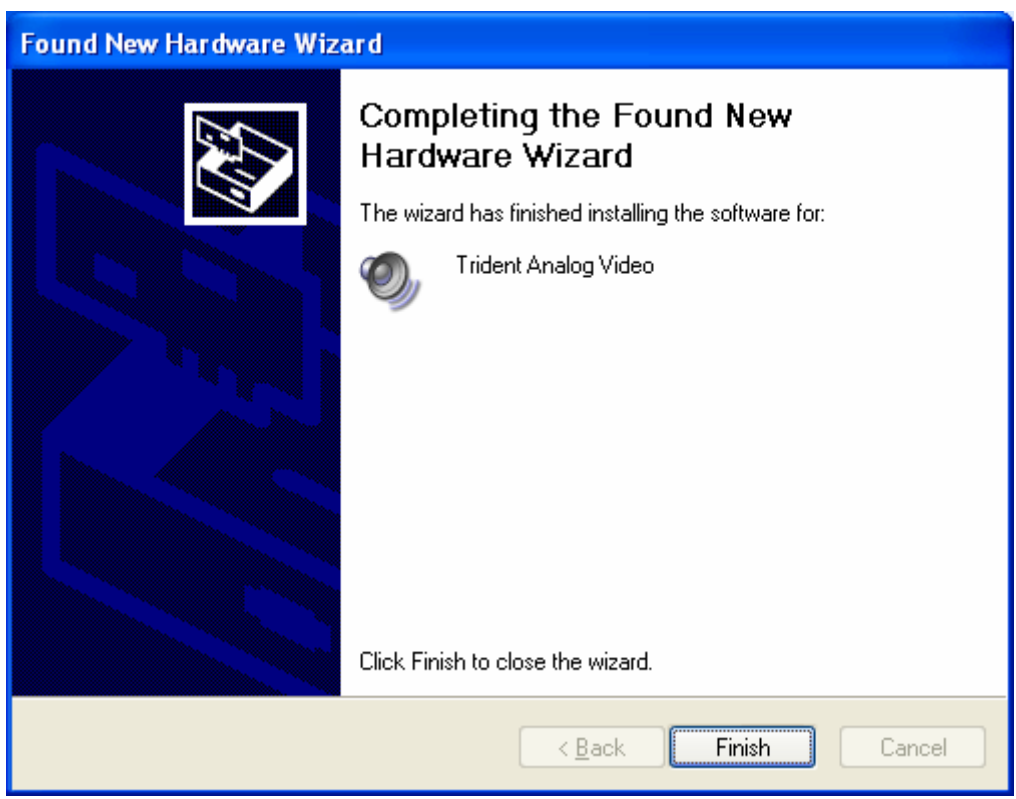
7. A guide window pops up as follows, click “Continue anyway” to continue.



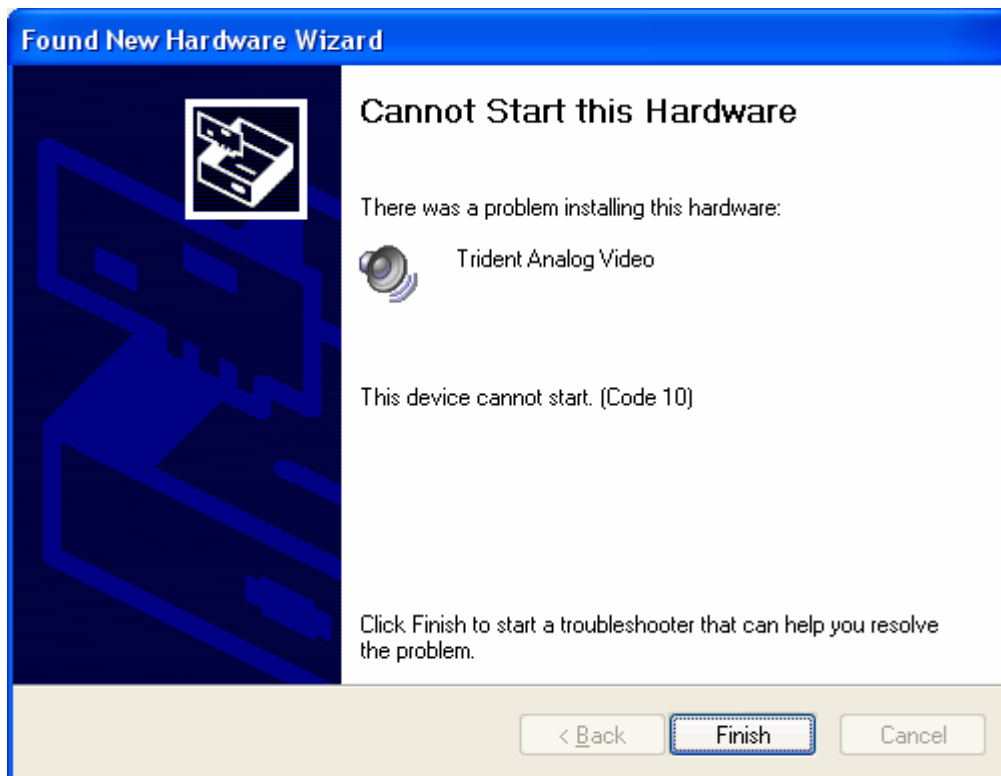
8. document copy window pops up as follows:



8. Click **Finish** to finish installing.



Note: If the USB port in your computer is USB 1.1, the driver installation will not be finished, and the *cannot start this hardware* window will appear as follows:



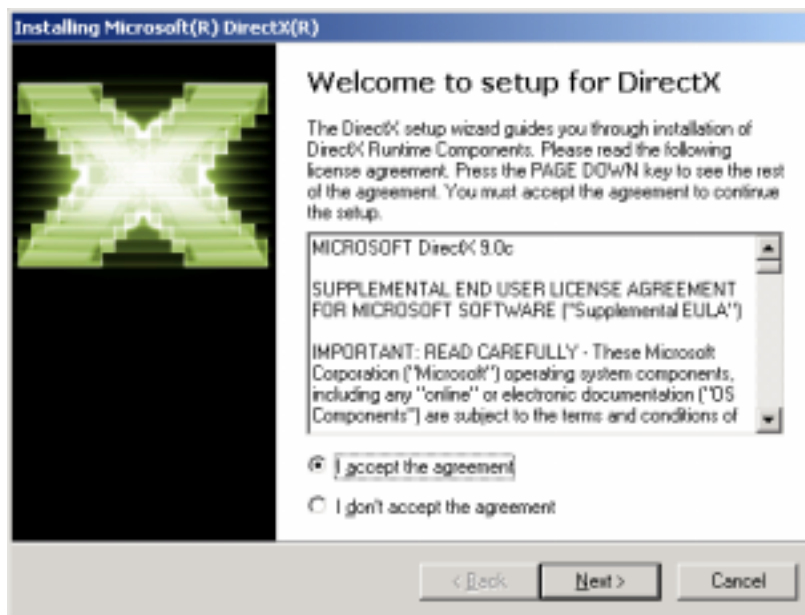
Part 3. Microsoft DirectX9 installation

If you have not install DirectX9 in your system, you have to install it; and you can skip this part if DirectX9 has been installed before.

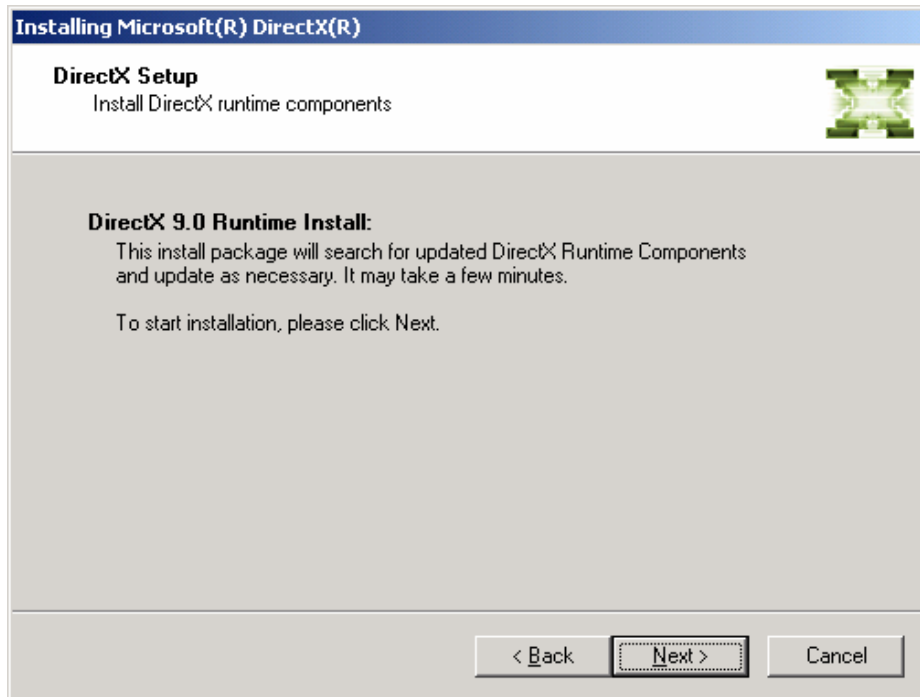
1 . Back to the installation screen :



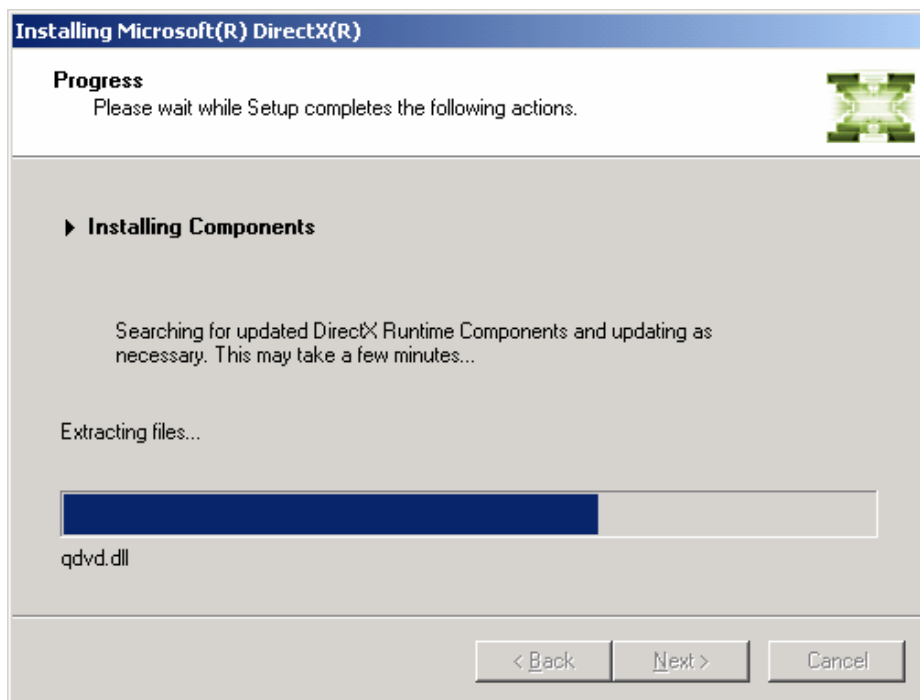
2 . Click **DirectX 9**, pop up *installing Microsoft(R) DirectX(R)* window as follows. Choose “I accept the agreement” and click **Next** to continue.



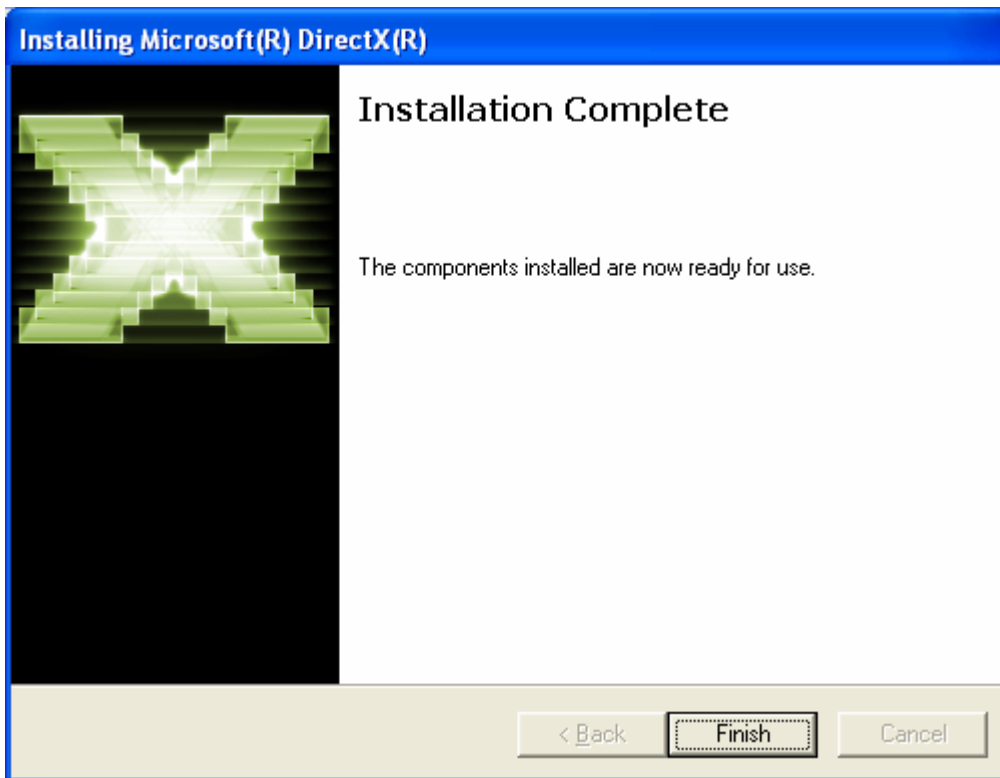
3 . The *DirectX Setup* screen appears as follows, click **Next** to continue.



4 . The *Progress* screen appears as follows, start DirectX 9 installation.



5 . Installation has been completed.

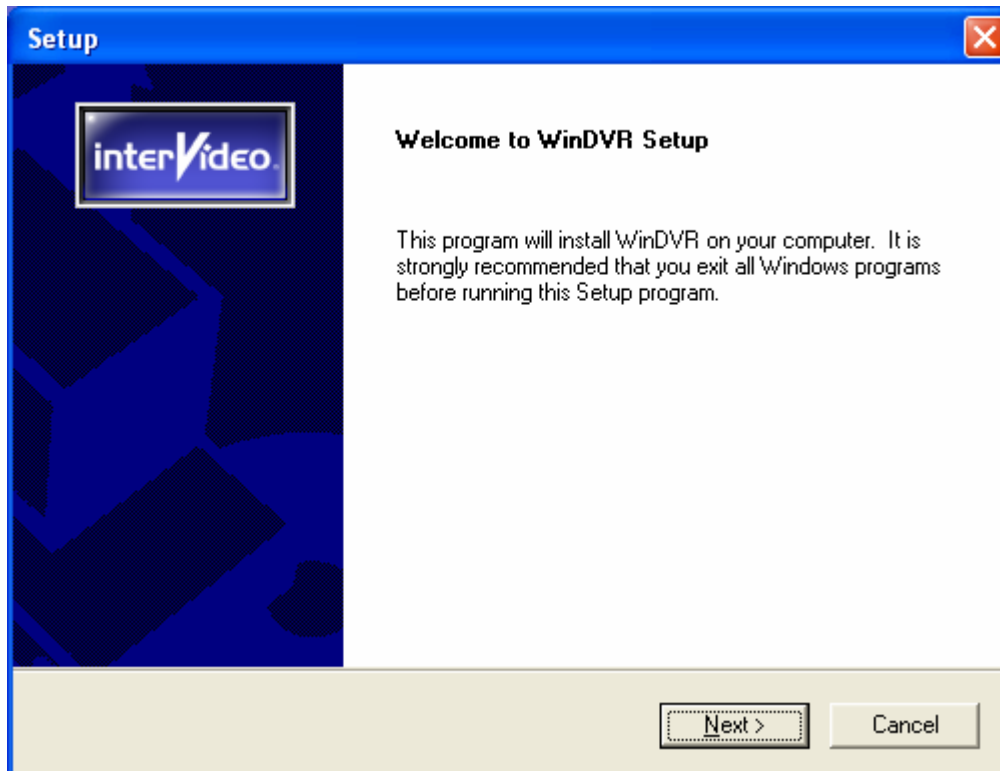


Part 4. WinDVR software installation

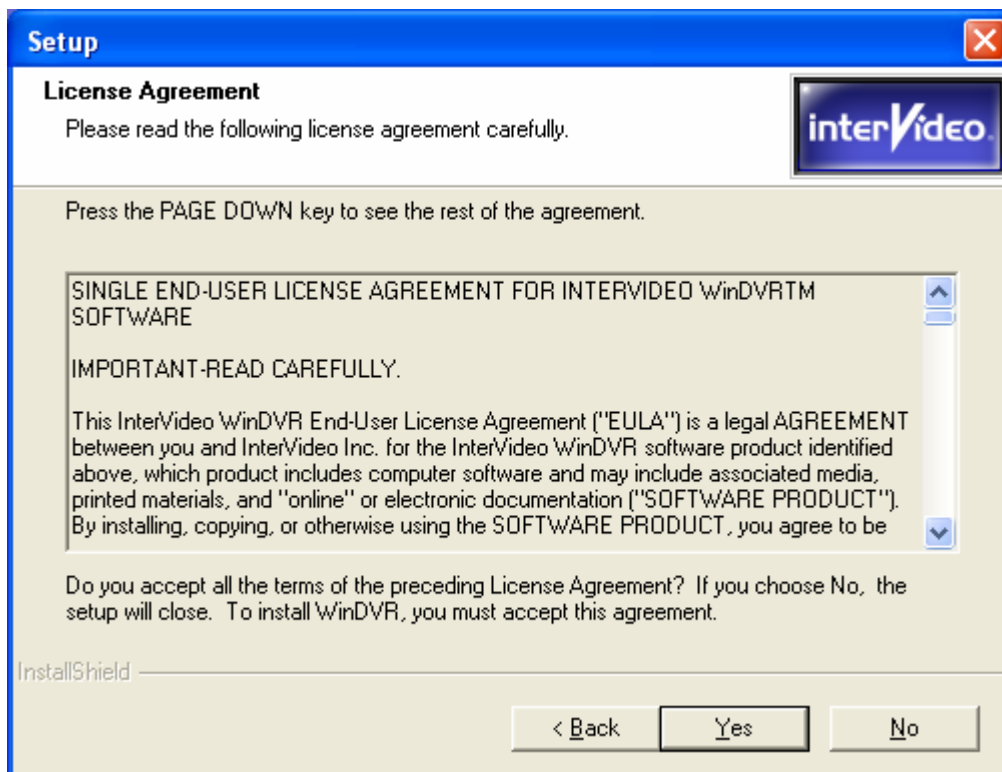
- 1 . Back to the installation screen :



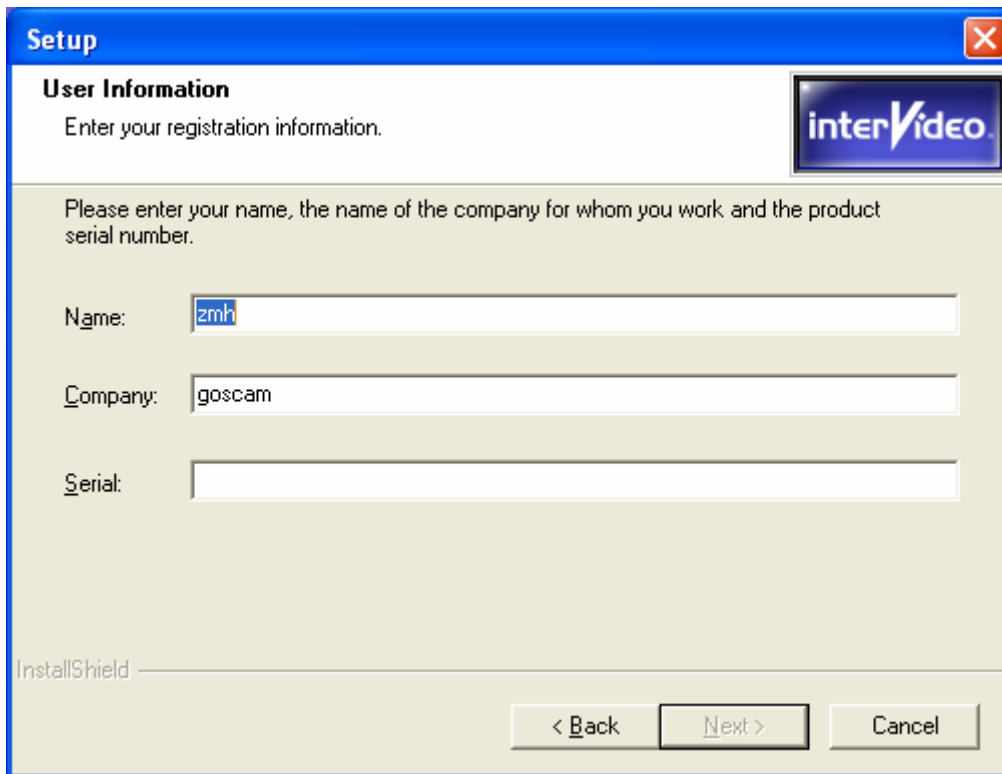
2. Click **WinDVR** button, the *Setup* window pops up as followed,



3. Click **Next**. The *License agreement* screen appears.



4. Click Yes. The *User Information* screen appears as follows:



Setup

User Information
Enter your registration information.

Please enter your name, the name of the company for whom you work and the product serial number.

Name:

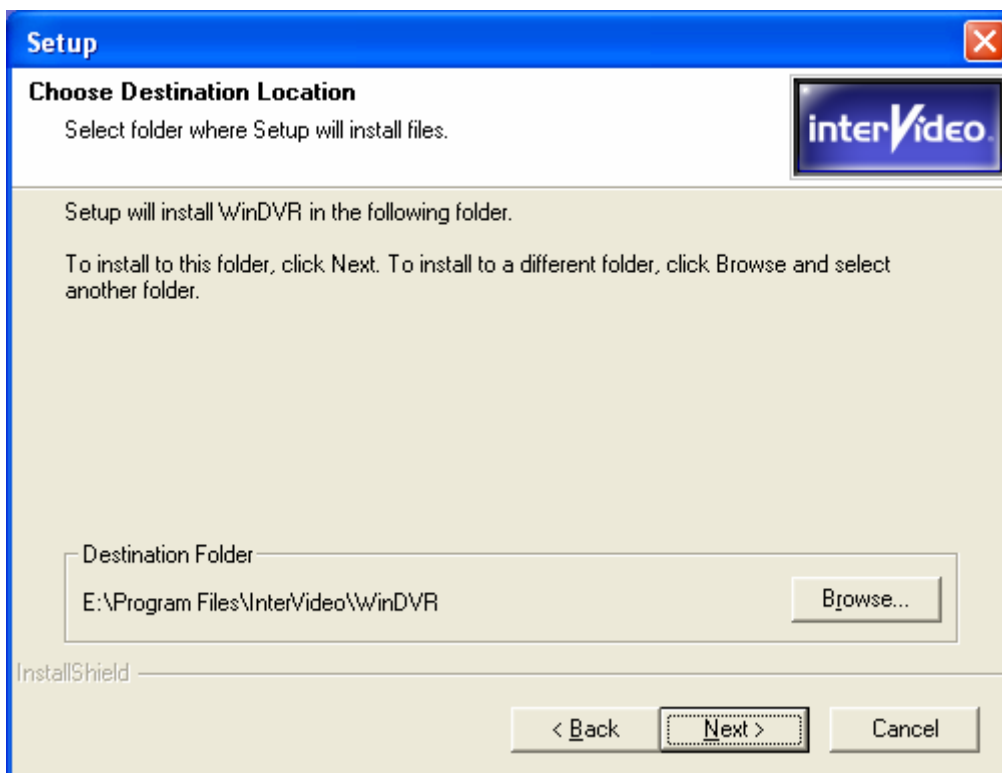
Company:

Serial:

InstallShield

< Back Next > Cancel

- 5 .Input Name, Company name and the Serial Number of product. You can find the Serial Number in the installation CD, and then click **Next** to continue.



Setup

Choose Destination Location
Select folder where Setup will install files.

Setup will install WinDVR in the following folder.

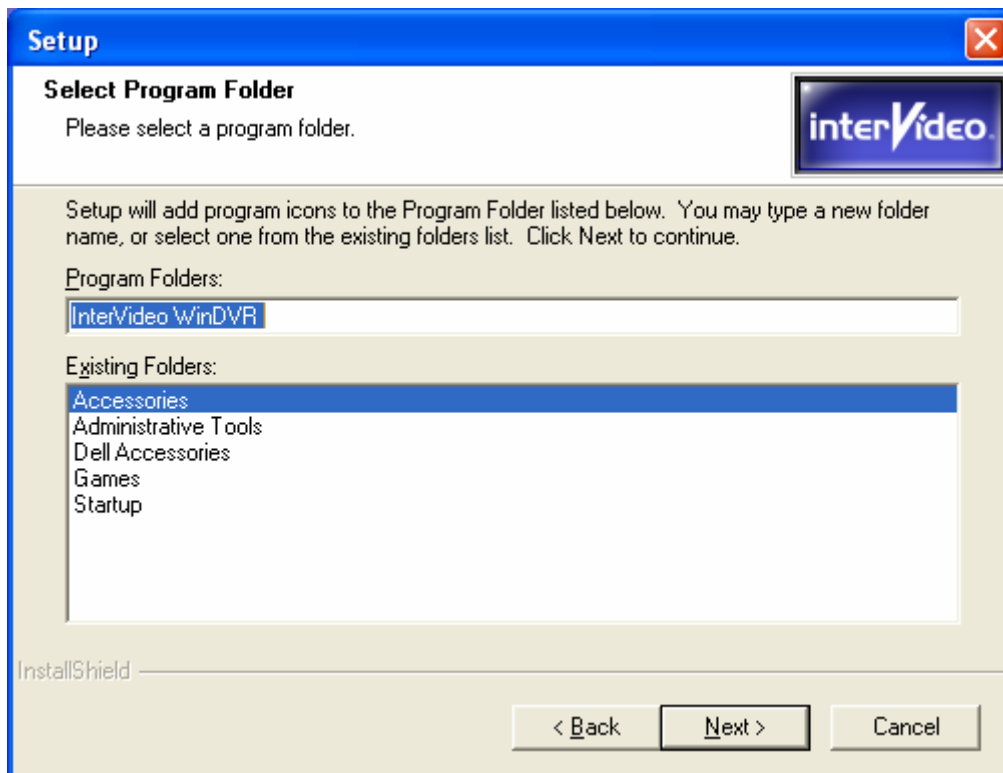
To install to this folder, click Next. To install to a different folder, click Browse and select another folder.

Destination Folder
 Browse...

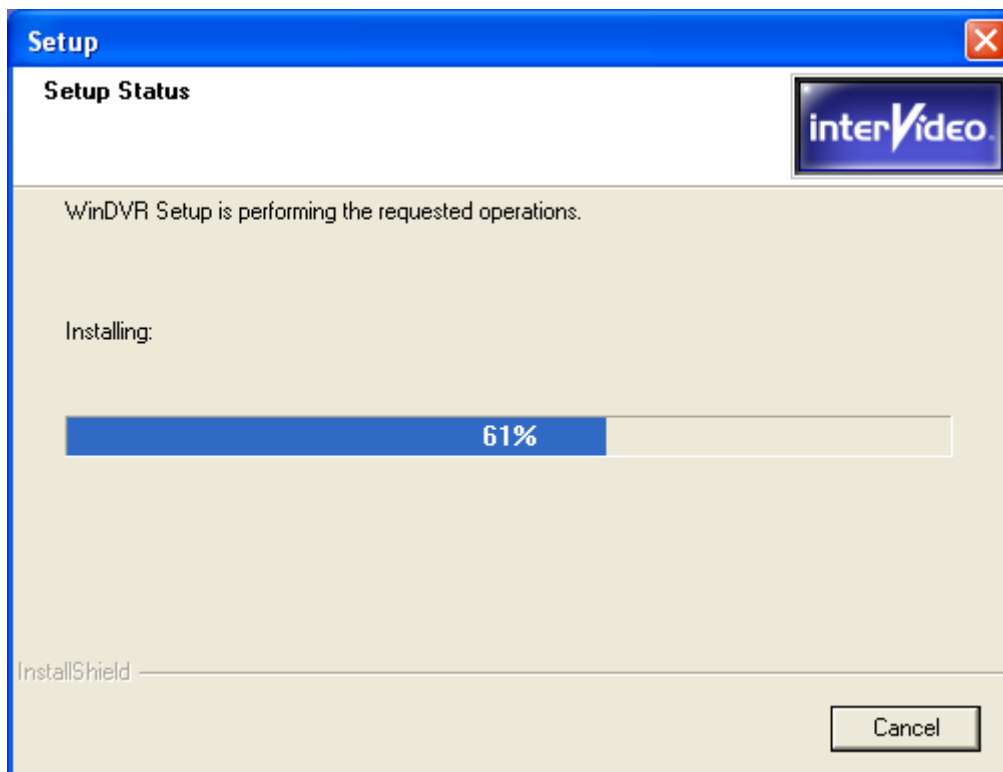
InstallShield


< Back Next > Cancel

6 .Select the installation path and then click **Next**, the *Select Program Folder* screen will appear as follows:




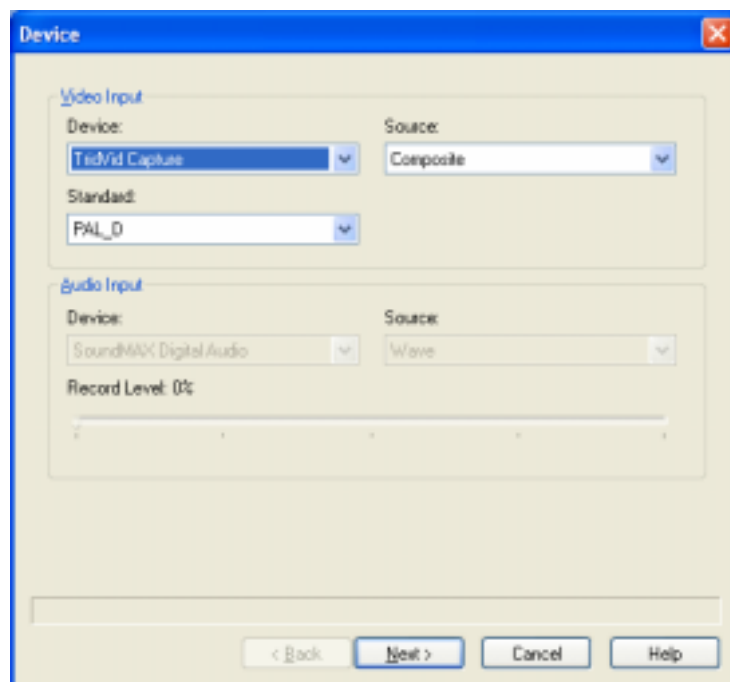
7 . Click **Next**, the *Setup Status* window appears as follows:



8 .Click **Next** to finish installation. Then you will find the WinDVR icon  and its shortcut link on the desktop and in the “InterVidio WinDVR” folder in the “Program” menu under the “Start” menu.

Part 5. WinDVR Initial System Settings

- 1 . The Initializing Wizard will automatically pop up when WinDVR is opened for the first time only. Initializing Wizard will quickly run through each Property for any setting changes that is needed. This Wizard goes through the important settings needed to help run WinDVR flawlessly. You can click **attribute** button as  to pop up “attribute” dialog box. The dialog box is composed with many option card, and any option has its own specifically function setting group.



Video input:

Equipment

Select the equipment in the drop-down list. Here we choose GP-723 which is connected to the PC.

Source

Select **Composite** in the drop-down list.

Standard:

Select the standard of monitor.

Audio input:

Equipment

Select the audio input equipment in the drop-down list. The default equipment is your soundcard.

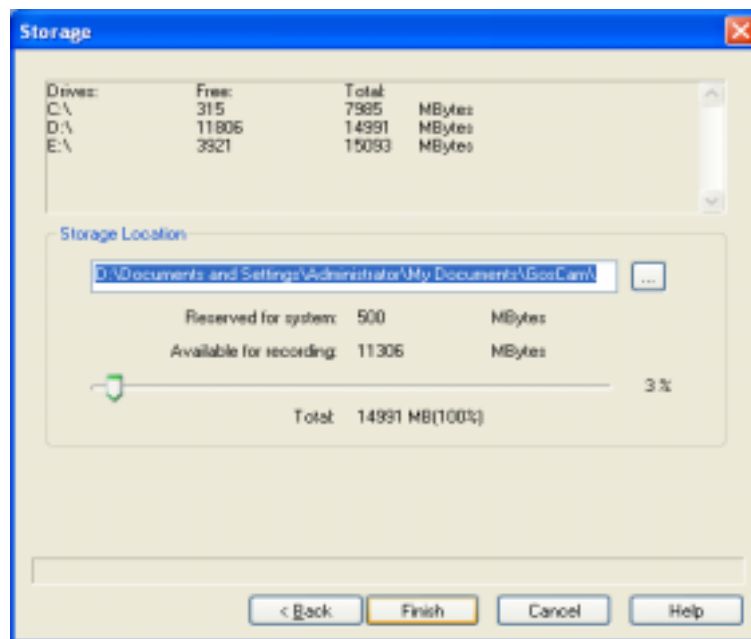
Source

Apply the default settings.

Record level

Determine the audio volume level in the recorded file.

2. Click Next to continue. The Storage window pops up as follows. The Storage properties page, allows you to assign the amount of space and location, for storing recorded programs and captured still images. The default location is: C:\My Documents\My Videos. Use the button to browse for the drive and folder path where you want to store recorded programs and captured still images. Next, use the slider to set the maximum amount of disk space you want to assign for recorded files. The total amount of recording time is limited by the drive space available. You can adjust the record quality in order to store more information on the available space. The top section of the page provides a quick overview of the drives in your system, and available free space.



5. Click **Finish** to close the attribute settings window. Then you can see the video received from GS-723 in the WinDVR video window.



Part 6. WinDVR widget introduction

1 . WinDVR Control Panel

- In normal state, WinDVR Control Panel is as followed, all usual functions are available.



- In record state, WinDVR Control Panel is as followed:



- In playback state, WinDVR Control Panel is as followed:



2 . Explanation of the function of WinDVR control panel

Buttons



Exit and Minimize WinDVR Control Panel.



Exit - close the application.



Record - Starts recording TV and encoding it into MPEG-2 format.



Play – Begin to play the recorded program.



Stop - Stops current action (e.g. recording, playback, Timeshifting, etc.)



Pause - Suspends current action (e.g. playback, live TV, recording, etc.)



Still Capture - Captures still images of current program.



Zoom and Pan - Lets you zoom in on the screen and then pan around it.



Alarm – Set up alarm state.



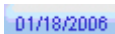
Setting – Opens WinDVR attribute setting window.



Online Help System - Opens HTML help file



Provides the status of the ongoing process and selected configuration.



Displays the local date.



Displays the video time.

09:09:20

Displays the local time.



Sound



Mute - Mute or restores sound.



Volume Control - Increases or decreases volume intensity.



Playback control bar



Rewind - Moves backward through the current program



Fast Forward - Moves forward through the current program



Previous Chapter - If you are playing recorded program with chapter breaks you can use this button to go to the previous chapter.



Next Chapter - If you are playing recorded program with chapter breaks you can use this button to go to the next chapter.



Channel 1



Channel 2



Channel 3



Channel 4



Channel-scan

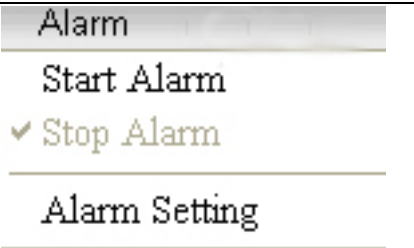
3 Play Interface Menu Explanations

View	<p>Optional channels: Camera1, Camera2, Camera3, Camera4</p> <p>Multi Camera: 4-channel -scan display.</p> <p>Multi Camera Time: set up the intervening time, 3 seconds, 6 seconds, 9 seconds, 12 seconds, or 15 seconds.</p> <p>Aspect Ratio – open the aspect ratio submenu :</p> <ul style="list-style-type: none"> ● At will - any size you like. ● 4 x 3 - 320 x 420 fixels size. ● 16 x 9 - standard movie size, or broad screen. <p>Screen size - open “screen size” submenu :</p> <ul style="list-style-type: none"> ● Original Size - 320 x 240 fixels size. ● Double Size - 640 x 480 fixels size. ● Full Screen <p>Panel Display—open “control panel” submenu:</p> <ul style="list-style-type: none"> ● Always—Activate the hidden panel. ● Hidden—hide the panel. <p>OSD - Activate or stop “screen display”.</p> <p>Always On Top—The video interface and control panel are always on top of the screen.</p> <p>Display Setting—Open the “display” attribute setting window.</p>
Camera 1	
✓ Camera 2	
Camera 3	
Camera 4	
Multi Camera ▶	
Multi Camera Time ▶	
Aspect Ratio ▶	
Window Size ▶	
Panel Display ▶	
✓ OSD	
Always On Top	
Display Setting	

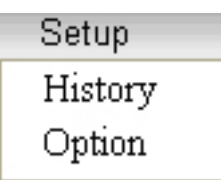
Record menu function explanations

Record	<p>Start Recording—begin to record program.</p> <p>Record Setting - choose “record” attributes setting option.</p> <p>Schedule Setting—Choose “schedule setting” attributes setting option.</p> <p>Save to Path — Choose “save” attributes setting option .</p>
Start Recording	
✓ Stop Recording	
Record Setting	
Schedule Setting	
Save to Path	


Alarm menu function explanations

	<p>Start Alarm—turn on the alarm.</p> <p>Alarm setting—Choose “alarm” attributes setting option.</p>
-----------------------------------------------------------------------------------	--------------------------------------------------------------------------------------------------------------------

Setup menu function explanations

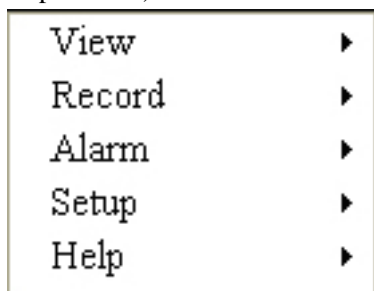
	<p>History—Choose “history” attributes setting option.</p> <p>Option—open the attributes setting page.</p>
-----------------------------------------------------------------------------------	--------------------------------------------------------------------------------------------------------------------------

Help menu function explanations

	<p>Help — open “user ’ s manual ” electronic document.</p> <p>About WinDVR—Access to software information.</p> <p>Register—Open the register webpage of this software.</p>
-------------------------------------------------------------------------------------	-------------------------------------------------------------------------------------------------------------------------------------------------------------------------------------------------





4 . The Right-Click Menu

At any time while running WinDVR, you can place the cursor on the display window and right-click to see a pop-up text menu as follows. The commands on this right-click menu are the same as those on the WinDVR play interface.(Please refer to the Play Interface Menu Explanation).




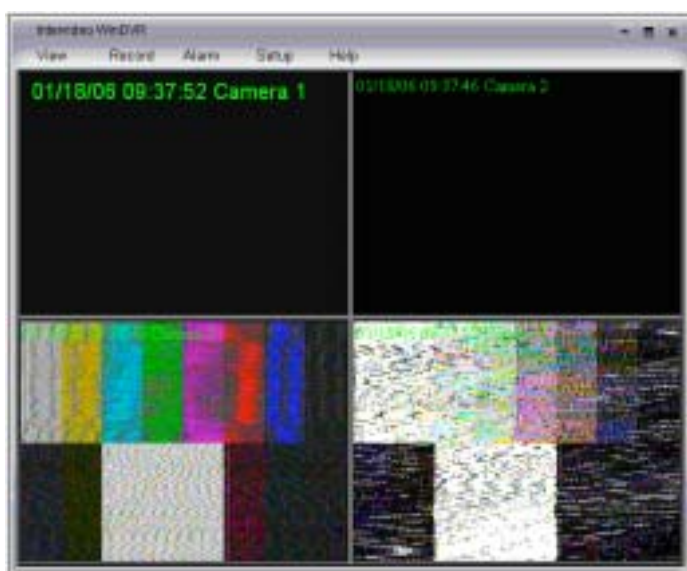
Part 7.Using WinDVR

1. Channel Option

When you click button , , , or  on the control panel, the video interface will display the first, second, third, or fourth channel.

2. Multi-channel Display

When you click  button on the control panel, a video interface will appear as follows:



The above interface circularly displays the four channels received by GP-723. Click the “Multi Camera Time” in the “View” menu to choose the interval for every channel, e.g. 3 seconds, 6 seconds, 9 seconds, 12 seconds, and 15 seconds.


3. Sound Control

1. This player defaults the simultaneous output of sound and video. There is a sound icon



on the control panel.


2. The click of icon  creates mute as icon .

3. The volume can be adjusted with the slide bar .

4. Recording

WinDVR is a digital video recording tool. You can use WinDVR to record a stream of full-motion video plus audio from your video source and save it in real-time using MPEG-4

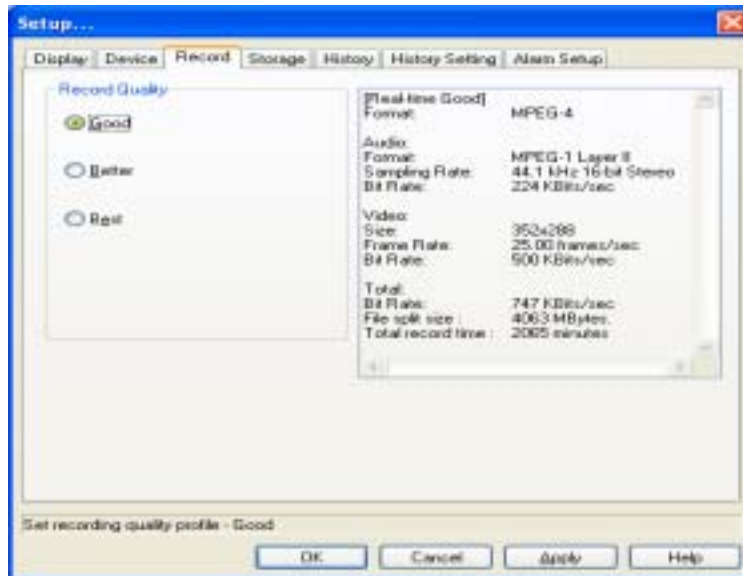
encoding directly to a designated area on your hard disk.

Click the icon  to record current video and the channel option button turns into gray. The record control panel is as follows:



1 . Adjust the record quality to your needs.


The Record property page, allows you to configure the video and audio input devices you want to use with WinDVR. This page also allows you to set the recording quality as follows.



Record Quality

Here you can select the output quality of recorded programs. During installation, WinDVR will automatically detect crucial system hardware components, and set a recommended recording quality level based on your configuration.

You can also adjust the recording quality by choosing one of the preset levels. The record settings related with each quality level are displayed on the right.

1 .Click “Record” icon . WinDVR starts to record the current video source on the display window.

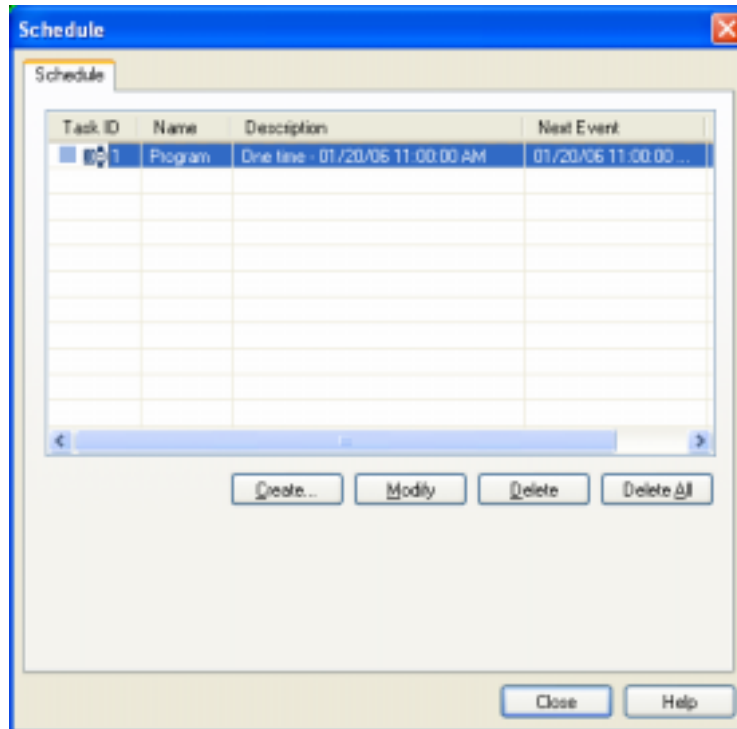
2. Click “Stop” icon  to stop recording.

If you want to play recorded documents or customize record time, please use “schedule setting” function.

5. Schedule Setting

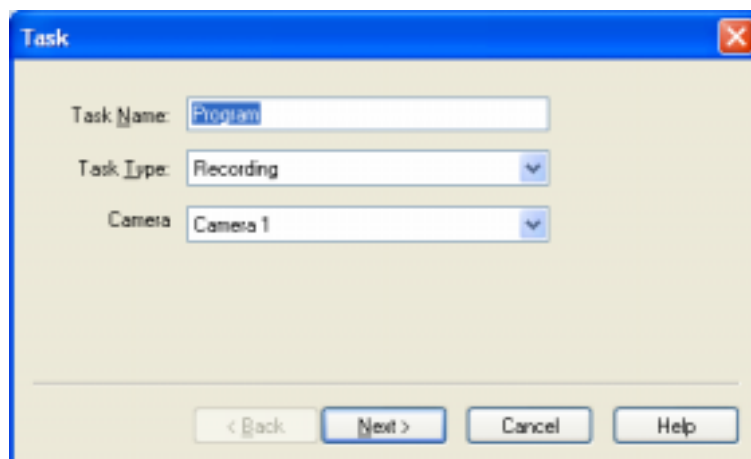
This function sets WinDVR to record camera video. The schedule setting can be set both once and repeatedly.

Click “Schedule setting” in the “Recording” menu to open the Schedule dialog box.



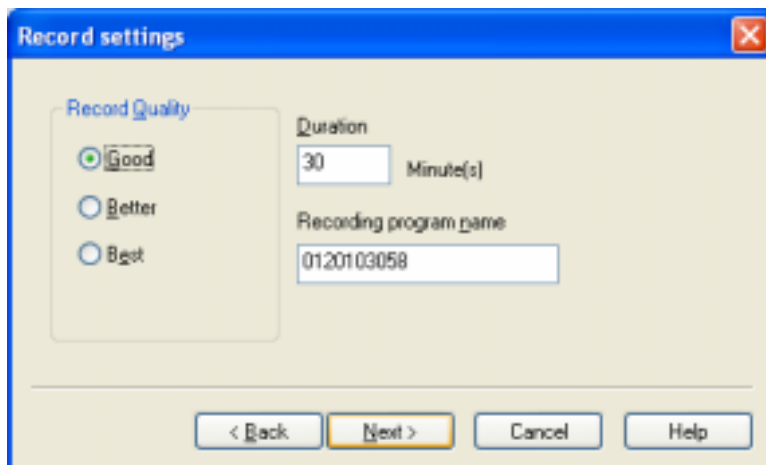
Add new item to the schedule task list:

1. Click **Create** button. Schedule guide will instruct you to finish the setting.

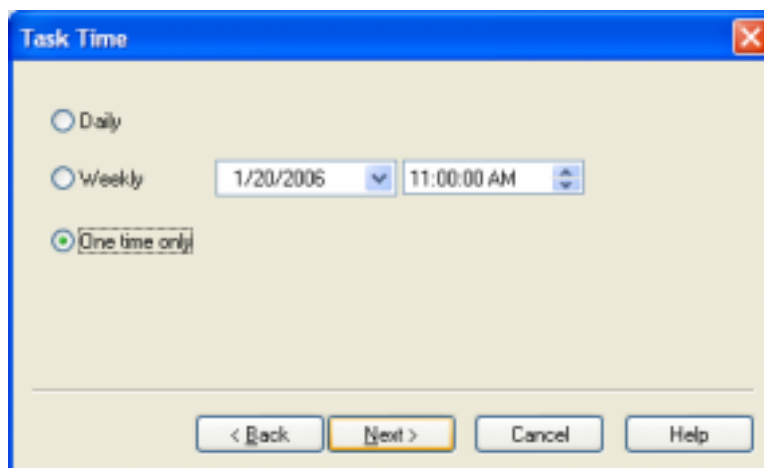


2. Choose task name. Task name will display in the task list.
3. Choose task type, e.g. recording or viewing reminder.
4. Choose video input source, e.g. Camera 1.

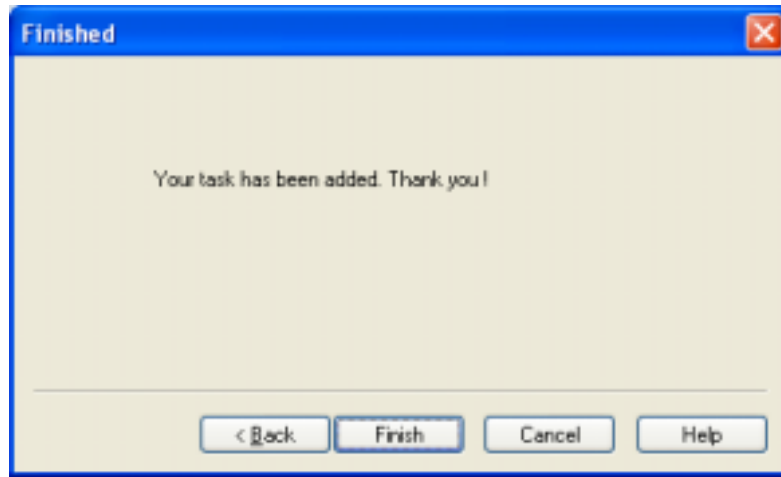
5. Click **Next**.




7. Set up the duration of program record.
8. Choose the program name.
9. Click **Next**.

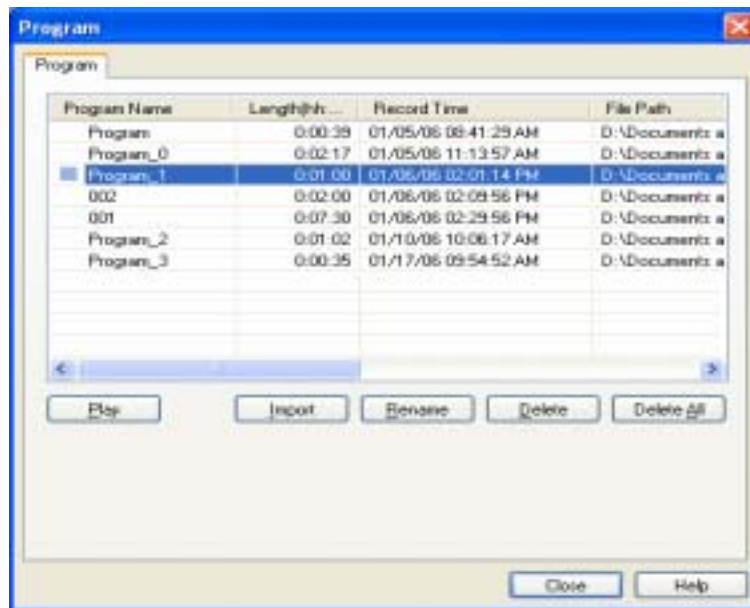


11. Set up the time for carrying out task.
12. Click Next, a dialog box appears as follows. Click "finish" to finish schedule setting.



6. Playback

Playback of recorded programs is performed by using the playback feature. This page describes how to playback recorded programs. Click the button  on the control panel.



Highlight the file name in the program list, double-click or press **Play** to start playback. Once a file is playing, the display area of the control panel provides information on the program currently playing.





The WinDVR control panel function is to control the program during playback as follows:





To rename a recorded program, highlight the file name on the program list and press the **Rename** button. Type in the new name and select Ok.


To delete a recorded program, highlight the file name on the program list and press the **Delete** button or use the **Delete all** button to erase all recorded programs.

If click the button  on control panel , it will play the recorded video fast backwardly.

If click the button  on control panel , it will play the recorded video fast forwardly.


If click the button  on control panel , it will play the next recorded video.

If click the button  on control panel , it will play the previous recorded video.

If click the button  on control panel , it will stop playing current recorded video.

7 . Still Image Capturing

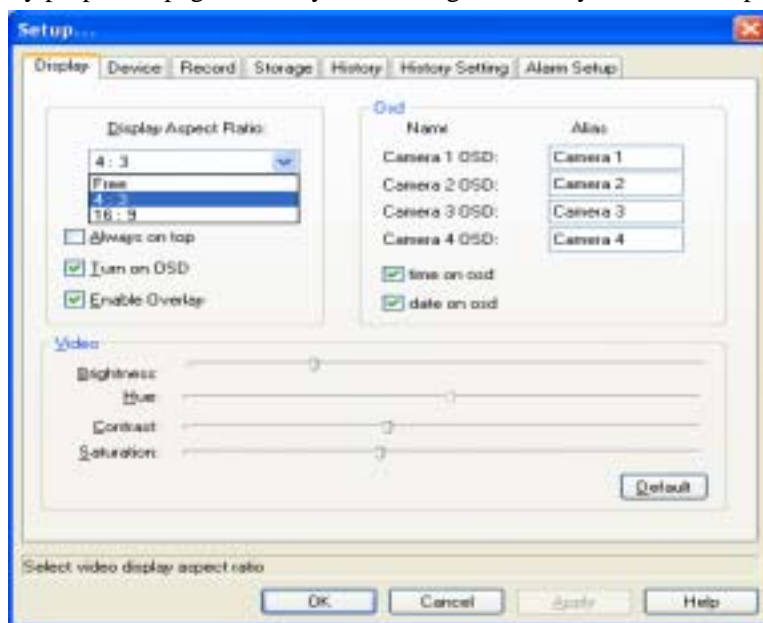
WinDVR also allows you to capture individual still images during program playback.

Use the capture icon  on the control panel at any time to capture an image of the display window.

Captured bitmaps are stored in the folder that you assigned for storing recorded and captured files. Check the Storage Properties page for more information.

8 . Display Properties

The Display properties page, allows you to configure the way WinDVR displays video.



Display Aspect Ratio

The size of the display window is determined by choosing between three aspect ratio formats.

- **Free** - Unlocked aspect ratio
- **4:3** - Standard
- **16:9** - Wide screen
- **Display or hide OSD**
- Interface can be covered – when other programs are running, it can be hidden under them.

If you set the aspect ratio to one of the two fixed options, **4:3** or **16:9**, the display window will always preserve and adjust to that aspect ratio. If you set the aspect ratio to **Free**, you can freely resize and stretch the display window.

Screen Display

- Channel name can be changed
- Display or hide the time
- Display or hide the date

Note - If the aspect ratio of the display window does not correspond with the actual aspect ratio of the video input, the video image may appear stretched or deformed.

Always on top

When you select the checkbox next to **Always on top**, the display window will always be visible, even when you are running other programs.

Video sliders

Use the sliders in this area to adjust:

Brightness - Adjusts the amount of white in the image.


Hue - Adjusts whether the image looks red, green, blue, yellow, orange, etc.

Contrast - Adjusts the gradation of tone between the image highlights, mid-tones, and shadows.

Saturation - Adjusts the color intensity of the image.

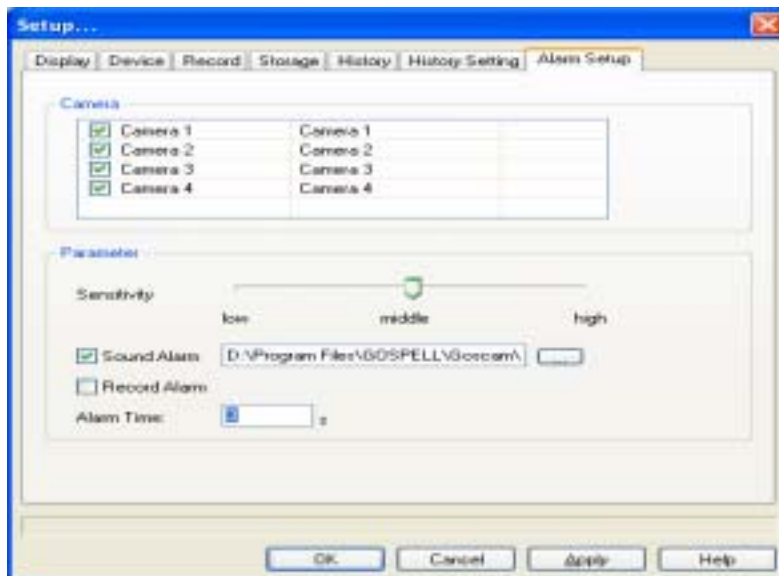
Pressing the **Default** button will reset the slider values to their original positions.

9. Alarm Properties Setting

Click the button  on the control panel to set alarming state. The control panel looks as follows:



You can also do alarm properties setting here. Open the alarm properties setting page as follows:



Choose alarm channel ,e.g. Camera1, Camera2, Camera3, Camera4 and so on.

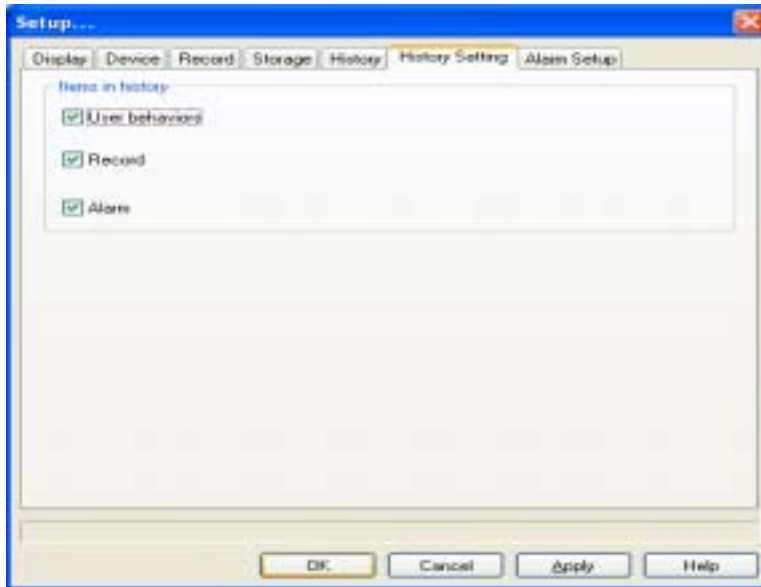
Set up alarming sensitivity: low, middle, or high.

Set up alarming sound You can choose your favorite audio document from the folder.

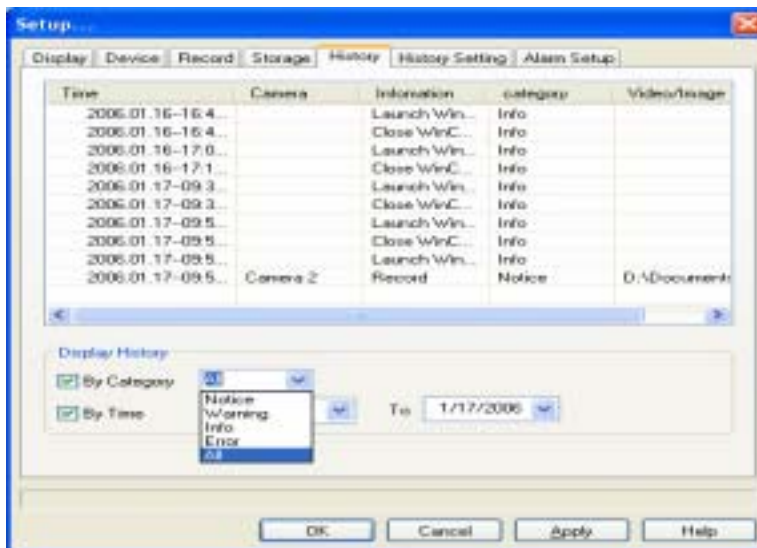
Alarm record When you choose this item, video is recorded when there is an alarm in the sensitivity range.

Alarming time Here you can set up and change the alarming time.

10. History Properties Setting



You can choose “user behaviors”, “record”, “alarm” on the above page so that the player can memorize current operation. You can view the record on the following page:




This page shows all operation record.

You can choose viewing type from “by category”, e.g. “Notice”, “Warning”, “Info”, “Error”, “all”.


You can choose record time.

11. Hiding/Displaying the Control Panel

1. Click the button  on the control panel to hide the panel.
2. Click video display interface to display hidden control panel.

12. Changing Your Settings

To change any property or feature of WinDVR:



1. Click  (the **Setup** icon). The **Properties** window will appear.
2. Select property page you want to change (e. g, **display**, **device**, **record**, **storage**, **History**, **History Setting**, or **Alarm Setup** properties)



3. If you are unsure about the meaning of a particular property, you can change these properties at any time. You may need to change certain pages first, before features on other pages become available.
4. Click **OK** again to accept your changes

12. Closing WinDVR:

To close WinDVR:

1. Stop any recording.
2. Click the Close icon  or .